



10.1"

Capacitive Touch HDMI Monitor

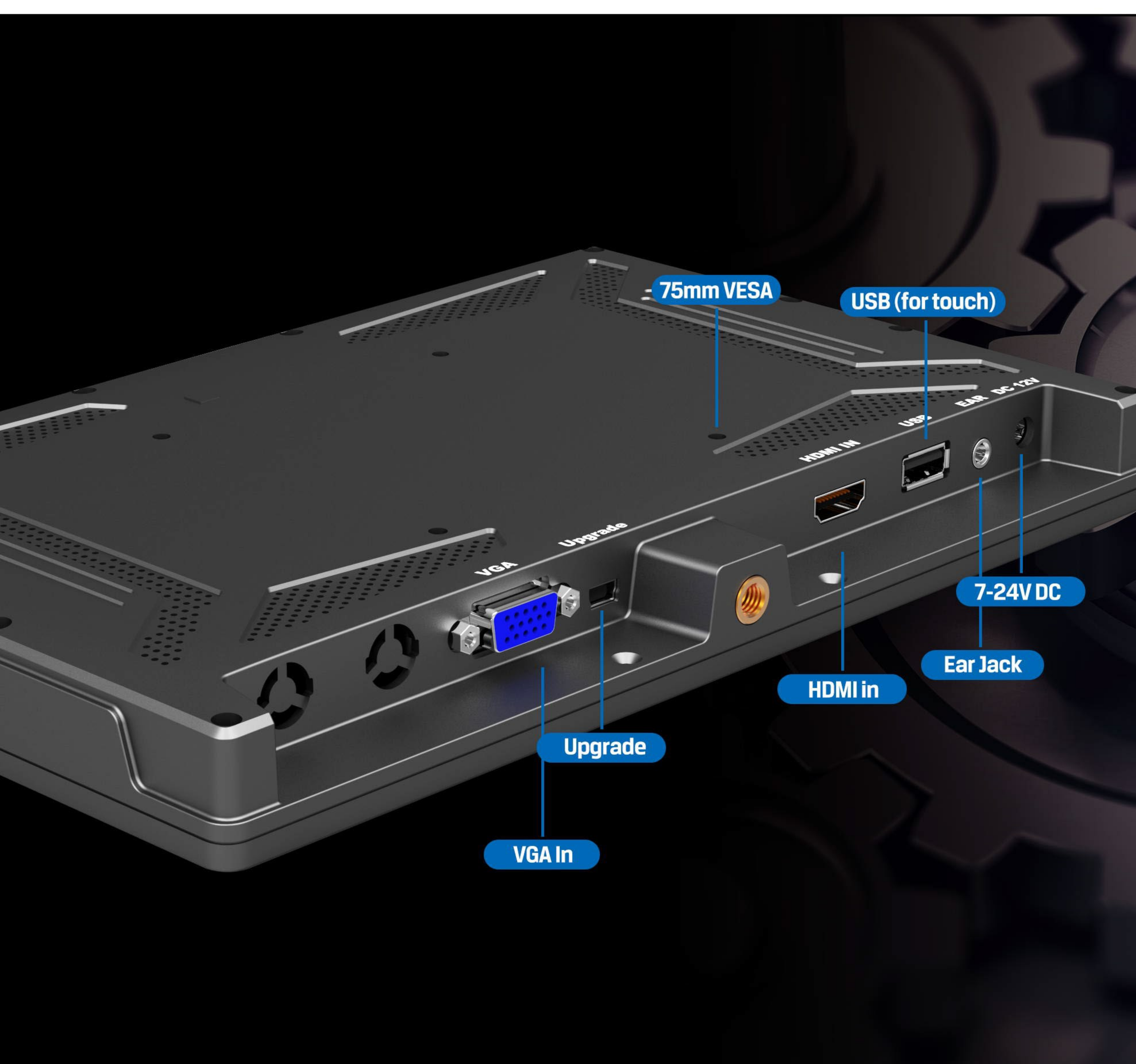


FHD Full Lamination Panel

It features 10.1" 16:10 LCD panel with 1920x1200 full HD resolution, 1000:1 high contrast, 175° wide viewing angles, which fully lamination technology so as to convey every detail in massive visual quality.

Adopt the unique Glass+Glass technology to smooth the appearance of its body and hold the widest view in order to achieve the best effect.

Moreover, flexible applications would be applied to various environment, i.e. commercial public display, external screen, industrial operation and so on.



HDMI+VGA Interfaces

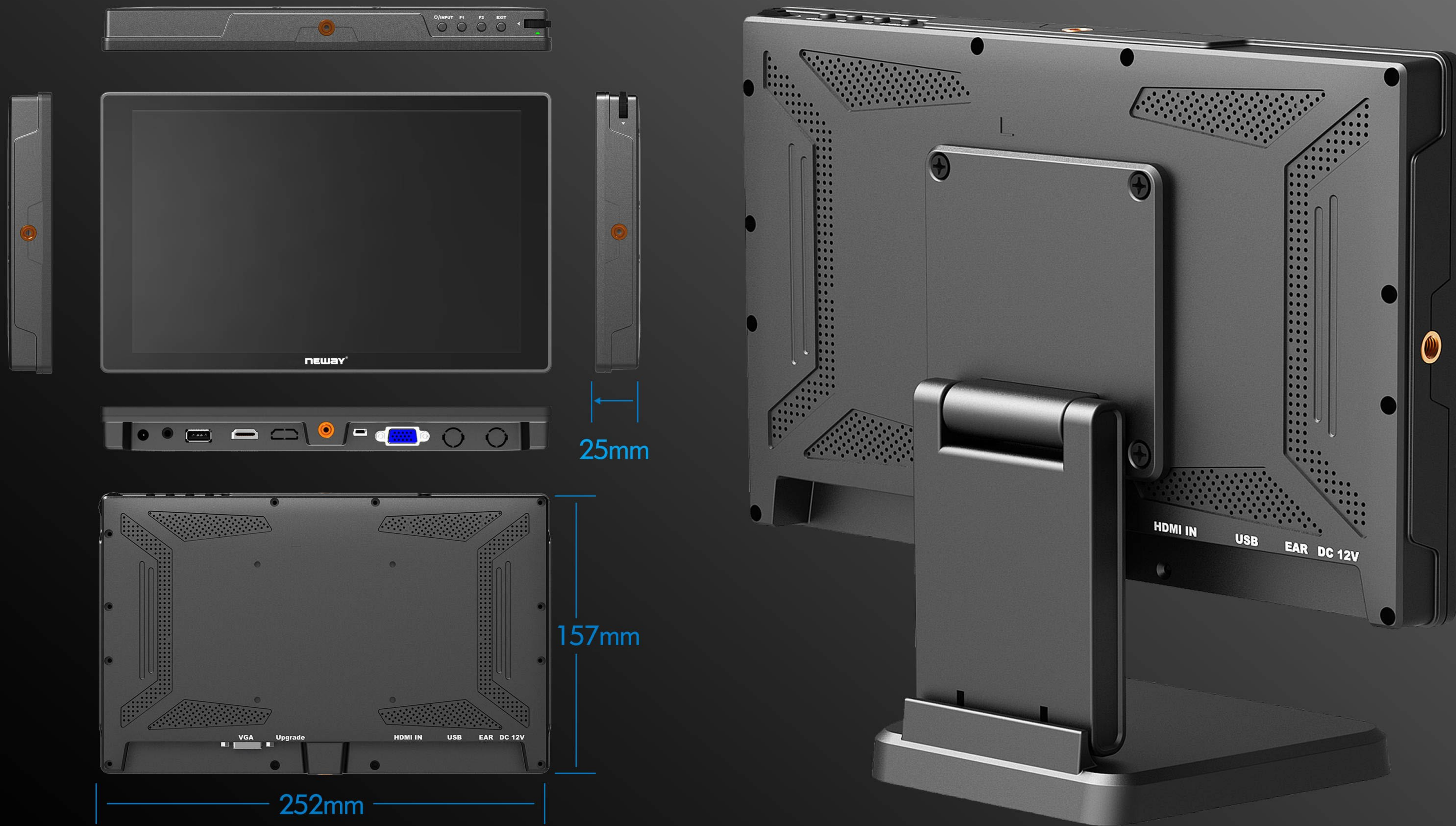
Compatible with HDMI and VGA signals. Also, the touch driver loaded by USB can realize the touch operation on the screen.

Wide Voltage Power

Built-in high level components to support 7 to 24V power supply voltage, allows to be used in more places.

Low Power Consumption

Working safely with ultra-low current in any situation, as well as the power consumption is greatly cut down.



Easy-to-use

F1&F2-definable buttons to custom auxiliary functions as shortcut, for example, scan, aspect, check field, zoom, freeze, etc. Use the dial to select and adjust the value among of sharpness, saturation, tint and volume.

⊕/INPUT button. Single press to power on, or switch signals; Long press to power off.

Folding Bracket (Optional)

Equipped with 75mm VESA folding bracket, it can not be retracted freely, but save space on the desktop, wall and roof mounts, etc.

Patent No. 201230078863.2 201230078873.6 201230078817.2

SPECIFICATIONS | ACCESSORIES

DISPLAY	Model No.	CL1016N & CL1016MT
	Display Screen	10.1" 8bit IPS
	Physical Resolution	1920x1200
	Aspect Ratio	16:10
INPUT	Brightness	320cd/m ²
	Contrast	1000:1
	Viewing Angle	175°/175°(H/V)
	HDMI	HDMI 1.4b×1 (support 4K 30Hz)
AUDIO	VGA	1
	Mini USB	1 (upgrade port)
	USB	1 (for touch)
POWER	Speaker	1
	Ear Jack	1
ENVIRONMENT	Current	≤750mA(12V)
	Input Voltage	DC 7-24V
DIMENSION	Power Consumption	≤10W
	Operating Temperature	0°C~50°C
	Storage Temperature	-20°C~60°C
	Dimension(LWD)	252mm × 157mm × 25mm
	Weight	535g

